



**Commodities  
International  
Survey Services**







**Company CISS  
(Commodities International  
Survey Services) -  
This is a team of professionals  
with experience of doing  
business in major international  
survey companies more than 10  
years.**

## ABOUT COMPANY

We have teamed up our forces, experience and knowledge in order to offer only the best practice and business solutions in the field of independent inspections for active commodities traders and others players all over the world.

Operational excellence and high standards of CISS GROUP allow our partners feel protected twenty-four-hour a day.



---

*It's Shipping & Survey*

# OFFICES AND REPRESENTATIONS

Head office of CISS Group Pte. Ltd. is located in Singapore.

CISS Group is group of companies involved in maritime business.

**There are three main business directions of the companies:**

- Survey (testing, inspection and certification) of different cargoes and commodities.
- Ship brokerage and vessel chartering, ship operation and management.
- Project management in shipconstruction and conversion. Marine power plants maintenance, overhauling and repair by mobile technical team.

We provide service globally - all around the world by own or subcontracted inspectors in more than 60 countries and more than 150 ports.



**CISS**  
Commodities  
International  
Survey Services





# SURVEY

CISS GROUP provide service globally - all around the world by own or subcontracted inspectors in more than 60 countries and more than 150 ports.

In some countries we have affiliated branches and in other countries we have a franchise partners, which act under one umbrella brand "CISS".

Our service is focused to support our clients to mitigate and minimize the risks which they might be faced with during export/import operations.

All global companies are involved in trade environment. Our aim is to respond to a constantly changing world and guarantee our customers the greatest possible competitiveness and security in survey services at the highest standards of quality on the basis of a flexible and efficient structure and rapid decision making.

We also involved in trade finance scheme to provide our customers with trade assessment and deliver them added value in the supply chain management.

We are accredited by ISO, GAFTA, FOSFA and some international finance institutions and banks.

The staff of company consists of professionals with impeccable reputation and great experience in cargo inspections.

In accordance to Basel Committee on Banking Supervision (BCBS) and Basel III rules the banks should maintain and update independent inventory, as well as control of stored pledged cargo.

CISS GROUP assists to the borrowers and the lenders in setting up cost effective and assess to the mitigating controls.

We are partner of GlobaSign. Our e-certificates (SSL Certificates) offer the strongest encryption and information is kept secure. These are value-add features to our customer and insurance that our electronic issued documents are well protected and they meet the demands of today's modern requirements in documentary letter of credits.

Issued by CISS GROUP digital certificates and inspection documents are fully compliant with UCP600\* requirements approved by the Banking Commission of the International Chamber of Commerce.

Considering the above, we can give QUICK respond to our partner's requests anywhere.



ciSS  
Commodities  
International  
Survey Services

\*) The Uniform Customs and Practice for Documentary Credits is a set of rules on the issuance and use of letters of credit.

# AGRICULTURAL Direction

## SMA

### Stock Monitoring Agreement

This service is most often used by banks and their trade finance departments, or by insurance companies

**The Purpose** is to control and calculate the physical existence and exact amount of pledged cargo (grain, oil, etc.) in places of storage, under which a loan is issued.

The Decision is a direct arrival of CISS GROUP's independent surveyor at the site for and attendance and checking out the exact amount of cargo stored and control of all warehouse receipts issued in the favor of the customer.



**CISS**  
Commodities  
International  
Survey Services

- **Determination of actual volume of the cargo by taking the measurements and calculations**
- **Instant informing the Customer in case of cargo shortage or visual damage**
- **Cargo sampling and sending to the independent laboratory for quality determination (to be agreed additionally)**
- **Submitting of all documents** approved by the grain elevator or warehouse, copies of record book and warehouse receipts; original certificate of grain (or other cargo) availability.
- **Photo report of all inspection stages**
- **Certificate issuing**



# AGRICULTURAL Direction

## Crop monitoring and future crop yield prognoses

This service is most often used by banks and their trade finance departments, or by insurance companies

**The purpose** is to control of identification points affecting quality and quantity of future crop, for which bank's funding is provided

**The Solution** is monitoring of whole growing crop stages and all related process by CISS GROUP's experts.



- **Analysis and assessment of the region's land suitability for cultivating exact crops and obtaining high yield indexes**
- **Analysis and evaluation of influences of the applied cultivation technology on the level of crop productivity**
- **Analysis of cost estimates and comparison with the preliminary expenditure budget**
- **Determination of the fields area/acreage as well as the area sown by a specific culture by using GPS Sensors**
- **Inspection and control of all technological processes (sowing, fertilization and plant protection, harvesting)**
- **Establishment of facts of the manifestation of insurance risks, their influence on the reduction of crop yields, calculation of losses**

# AGRICULTURAL Direction

## Crop monitoring

Calculation of planned yield, monitoring of each field

This service is most often used by banks and their trade finance departments, or by insurance companies

**The Purpose** is control of indications, affecting quality and quantity of future crop, for which funding is provided

**The Solution** is monitoring of this process by CISS GROUP's experts



- Determining the geo-referencing of the field on the map, its area/ acreage and the GPS coordinates of the boundaries
- Whole complex of necessary measurements and calculations to determine yields and its elements
- Inspection of general condition of crop cultivation
- Monitoring of negative factors in each field affecting and declining yields, their analysis and recommendations for their elimination
- Sampling of green plants/leaves and their parts for further laboratory research, including GMO determination
- Photographing in the process of inspection
- Forecasting and determining the value of biological and actual real crop yields at different stages of vegetation
- Preparing of report for each field, culture, region
- Creation of a dynamic picture of future crop amount and quality, prompt reporting about inspections, etc.





# 7 CBGF I 7 HCB 7 CBGI @HB;

## 9 b[ ]bYYf]b[

V^&@ ãæÁ^ ] ^!çã ã } Á  
[ -Á^ ããã \* Á | [ &••Á

H Y'Di fdcgYÁ Á @æ^Áçæ^Èá Èæ^DÁ^ æç Á  
& } d[ |Á -Á^ ããã \* Á æ áÁ } • d^ &ç } Á | [ &••Á Á  
& { ] |ãæ & Á ãçÁ^æ |ã ^•È  
Ô [ ] { | { ã Á -Á^• | ç Á ãçÁ^•ã } Á • ç æ •  
á [ & { ^ } çæ } Á æ áÁ çæ Á çæ áæá • È

H Y'Gc`i hçbgÁ Á [ ] ã |ã \* Á -Áç Á | [ &••  
à ÁÔÙÁÔÛUWÚç Á ç ] ^ | ç Á ç } • á Á Á  
Ô [ ç^ ] { ^ } çæ ç ç |ã • DÁ

- 5 bUmg]g`cZH9=fhYW b]WU`UbX`YWt bca ]W]bX]WUçfgLcZXYg][ b`Ygh]a UHYg
- Gi ddcfhZcf`dUgg]b[ `cZGHUHY`YI dYfh]gY`cZXYg][ b`UbX`UFW ]hYWi fYXcW a YbHU]çb
- Gi ddcfh]b`cVHU]b]b[ `h Y`bYWWggUfmidYfa ]hg`hc`ghUfhWtbgfhi W]çb`UbX`]bgHU`U]çb`k cf\_g
- HYW b]WU`gi dYfj ]g]çb`cZWtbgfhi W]çb`UbX`]bgHU`U]çb`k cf\_gK  
ã & { ã \* Á } d[ |Á -Á^ ããã \* Á æ^ |ã ç L  
monitoring of construction quality and installation works;  
control of works' deadlines and timing of building materials supply;  
control of construction and installation works' in compliance with project design and Governmental regulations;  
verification of acts of actually performed works;  
control of preparing of full executive documentation package by contractors and subcontractors to perform construction and installation works.
- **Support in commissioning of the facility upon completion of construction and installation works.**



# MOBILE EXPRESS GRAIN LABORATORY

It is used for quick departure directly to the fields - for sampling of soil or for control of the period of vegetation of plants.

Car also used for trips to internal inland siloses and ports for express analyzes of the quality of grain cargoes.



**CISS**

Commodities  
International  
Survey Services



# BASIC SERVICES



- incoming / outgoing cargo control
- inspection of holds cleanliness / containers / vehicle / wagons
- inspection of vehicle suitability for specified cargo carriage
- loading supervision twenty-four-hour a day



- visual inspection of cargo quality during loading/discharging operations
- cargo sampling during loading/unloading and a composite sample preparation as representative for whole cargo amount
- laboratory testing and analyses for all types of cargo



- draught survey (cargo volume determination on the vessel)
- loading supervision of containers including of liquid cargoes in flexi tanks
- sealing of vessel's holds /container's doors
- photo report of all inspection stages



**CISS**  
Commodities  
International  
Survey Services

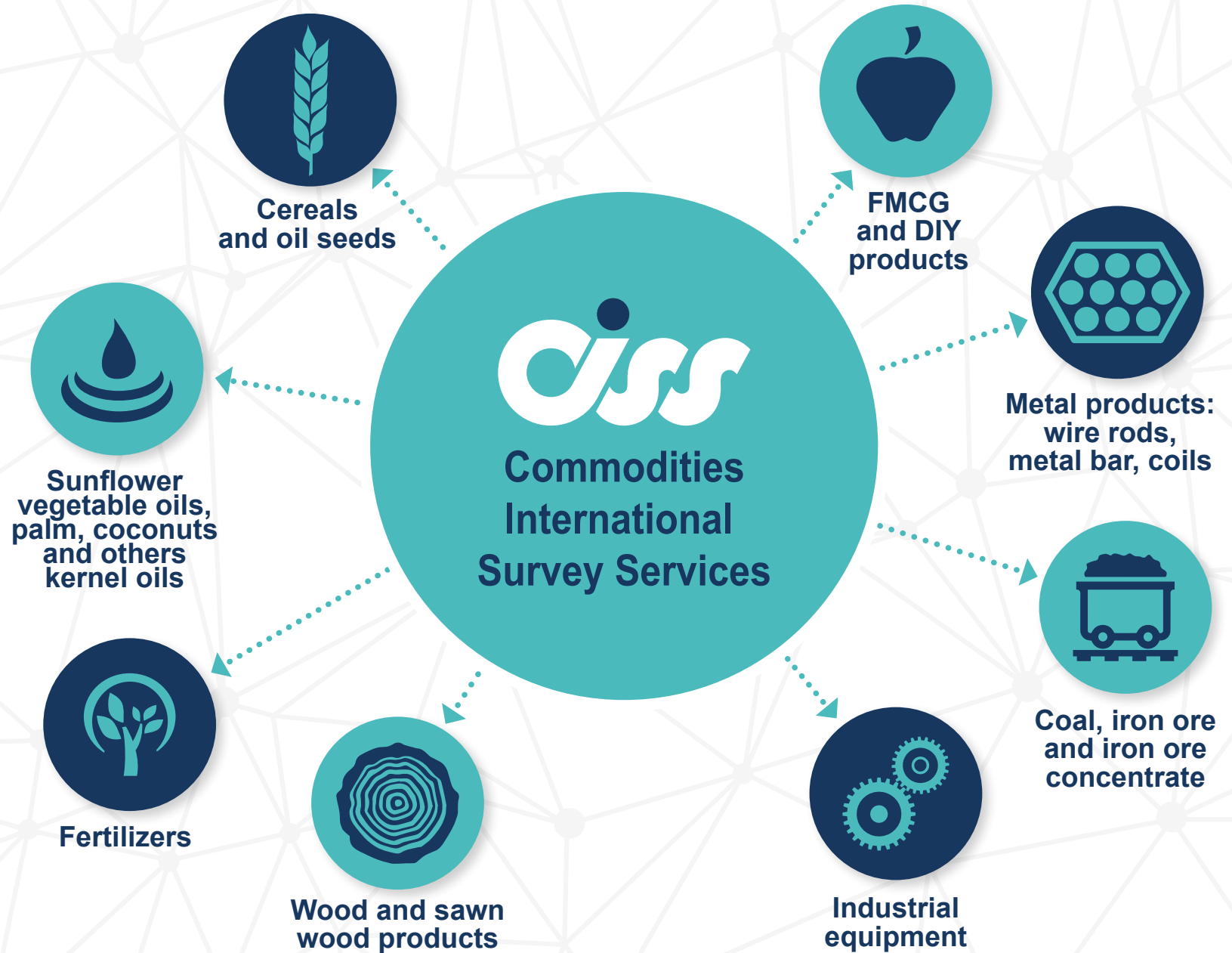


# ADDITIONAL SERVICES



- **Cereals cargo fumigation.**
- **SMA** (stock monitoring agreement) - confirmation of cargo availability and quantity / quality stored.
- **Crop monitoring** - forecasting of the future harvest.
- **Checking out of the technical condition** of warehouses, silo bins, terminals.
- **Vendor verification** – checking out of exporter physical existence, their factory accreditations and labor forces, technical capacities.
- **FOG** (Full Outturn Guarantee) – control of quantity of cargo during loading and the guarantee that it will be discharged in the same quantity. In case of shortage during discharge occur, insurance coverage will be applied, which provided by first-class international underwriters and reinsurance companies such as: Allianz, Havrico, AON, Munich Re, Lloyd’s and others.
- **FCR** (forwarder certificate of receipt) confirmation for cargo availability and amount accumulated in warehouses.
- **Escorting of the cargo** by the inspector from the place of origin (factory, plant, warehouse) to destination or shipment place (warehouse, port).
- **Temperature and moisture control** of refrigerated cargo (meat, fish, fruits) during whole COLD supply chain delivery by using temperature sensors.
- **Vehicle location and movement inspection** by GPS sensors for transport facilities.
- **Checking out of cargo securing** on the vessel or into container.
- **Consulting assistance not in cargo survey only.** We provide advising for appropriate place of storage, transshipment or terminal facility and cranes capacity. We will help you in forwarding and ocean freight.

# TYPES OF CARGOES FOR INSPECTIONS





# ADVANTAGES



Respectability towards the Client. Deep understanding and perception of customer's business



Quick decision making and prompt quotations



Integration with high-tech IT solutions



First-class international accreditations



Special discount program for complex of services (incoming control, vessel inspection, fumigation)  
Flexibility in rates formations



World-wide partners presents



Absence of corruption



Accuracy, responsibility, reliability

# ACCREDITATIONS





# OUR PARTHNSERS



# CONTACTS



**Commodities  
International  
Survey Services**



**10 Anson Road #29-05a  
International Plaza  
Singapore (079903)  
Reg.No 201618838r**



Department  
of contracts execution:  
**inspection@ciss-group.com**

General questions:  
**office@ciss-group.com**



**+(65) 9391-9397**  
Singapore, Head office

**+380 67 6300181**  
**+380 50 3277575**  
Black Sea Region

**+31 6 826 86968**  
Rotterdam

**[www.ciss-group.com](http://www.ciss-group.com)**

---

*It's Shipping & Survey*