

**FULL LOADING SUPERVISION / STEEL PIPES / OFFSHORE PROJECT**

Vessel/ Installati	: mv Trans	Location	: Batu Ampar, Indonesia/ Singapore
Customer	:	Date	: 24/02/2023-07/03/2023
Job number	: SGD00932	Client Ref No	: L XK/2988/2022/F216/0007





*It's shipping & survey*

**CISS GROUP PTE.LTD.**

Registry address: 10 Anson Road , # 20-05,  
International Plaza, Singapore, 079903  
Reg.No 201618838R  
Operation office: 77 Science Park Drive Str.,  
CINTECH III Business Center, #03-25/26,  
Singapore 118256

**Time sheet**

DATE	FROM	TO	
20 February 2023	16.20 hrs		Arrived Pilot Station / Nor
	16.35 hrs		Drop anchor
21 February 2023	11.20 hrs		Agent & Quarantine on board
	11.45 hrs		Free Pratique
	12.15 hrs		Agent disembark
24 February 2023	07.00 hrs		On board
	07.00 hrs	13.00 hrs	Hatch covers Ultrasonic water tightness tests
	13.00 hrs	19.00 hrs	Holds Silver tests (by Silver nitrate - AgNO3)
25 February 2023	07.25 hrs		Pilot on board
	08.50 hrs		First Line
	09.00 hrs		Berthed
	09.20 hrs		Pilot Disembark
	10.00 hrs		Gangway Landed
	10.00 hrs		Preparation lifting gears
	10.27 hrs	10.57hrs	Meeting on board all party
	10.56 hrs		Open Hatch Cover
	11.00 hrs		Inspection lifting gear by vetco gray
	11.20 hrs	12.00 hrs	Preparation Dunnage for bottom layer
	12.00 hrs	13.00 hrs	Break
	13.00 hrs	15.12 hrs	Preparation on board, marking and layering dunnage
	15.12 hrs	15.22 hrs	Safety briefing
	15.22 hrs	15.30 hrs	Stevedore onboard
	15.30 hrs	15.43 hrs	Preparation lifting gears
	15.45 hrs	17.15 hrs	Commence loading
	17.00 hrs	17.15 hrs	Stevedore disembark
	17.15 hrs	19.00 hrs	Break time
	19.00 hrs	19.20 hrs	Safety briefing
	19.20 hrs	19 45 hrs	Stevedore onboard
	19.45 hrs	23.45 hrs	Resumed loading
	23.45 hrs	24.00 hrs	Stevedore disembark
24.00 hrs	01.00 hrs	Break time	
26 February 2023	00.50 hrs	01.03 hrs	Safety briefing
	01.10 hrs	1.20 hrs	Stevedore onboard
	01.20 hrs	04.00 hrs	Resumed loading H2,H3,H4
	02.30 hrs		Stop activity H2 waiting chocking wedges
	04.00 hrs	04.15 hrs	Stevedore disembark



*It's shipping & survey*

**CISS GROUP PTE.LTD.**

Registry address: 10 Anson Road , # 20-05,  
International Plaza, Singapore, 079903  
Reg.No 201618838R  
Operation office: 77 Science Park Drive Str.,  
CINTECH III Business Center, #03-25/26,  
Singapore 118256

	04.15 hrs	08.00 hrs	Break time
	08.00 hrs	08.30 hrs	Safety briefing
	08.30 hrs	09.00 hrs	Stevedore onboard
	09.00 hrs	11.45 hrs	Resumed loading H2,H3
	11.30 hrs	11.45 hrs	Stop lifting crane 3 & 2, chocking inside hold
	09.00 hrs	11.45 hrs	Chocking and Framing H4
	11.45 hrs	12.00 hrs	Stevedore disembark
	12.00 hrs	13.00 hrs	Break time
	13.00 hrs	13.15 hrs	Stevedore onboard
	13.15 hrs	16.45hrs	Resumed loading H2 & H3
	13.15 hrs		H4 resumed chocking frame
	14.50 hrs	16.45 hrs	Resumed loading H4
	16.45 hrs	17.00 hrs	Stevedore disembark
	18.00 lt		Lashing gang disembark
	17.40 lt	18.00 lt	Break time
	19.10 hrs	19.20 hrs	TBT
	19.25 hrs		Stevedore onboard
	19.30 hrs		Resumed loading H2 ,H3 & H4
	19.35 hrs		H4 resumed chocking frame
	19.30 hrs	20.30 hrs	Resumed loading H4
	23.45 hrs		Stevedore disembark
	23.45 Lt	01.00 hrs	Break time
27 February 2023:	01.00 hrs	01.10 hrs	Safety briefing
	01.15 hrs	01.30 hrs	Stevedore onboard
	01.30 hrs	02.00 hrs	Resumed loading
	01.30 hrs		H4 resumed chocking frame
	02.10 hrs	05.00 hrs	Temporary stop due to sea swell and vessel moderate rolling
	05.00 hrs		Break time
	08.00 lt	08.15 lt	Safety briefing
	08.01 lt	08.30 lt	Stevedore onboard
	08.30 lt	10.05 lt	Resumed loading
	10.05 lt		Suspended loading due to strong wind and rough sea, chocking H4 still continue
	10.50 lt	12.00 lt	Resumed loading
	12.00 lt	13.00 lt	Break time
	13.00 lt	13.10 lt	Safety briefing
	13.10 lt	13.26 lt	Stevedore on board
	13.26 lt	16.45 lt	Resumed loading
	16.45 lt	17.00 lt	Stevedore disembark
	17.00 lt	19.00 lt	Break time
	19.00 lt	19.35 lt	Safety briefing
	19.35 lt	19.43 lt	Stevedore onboard
	19.40 lt	23.25 lt	Resumed loading H2, H3, H4



*It's shipping & survey*

**CISS GROUP PTE.LTD.**

Registry address: 10 Anson Road , # 20-05,  
International Plaza, Singapore, 079903  
Reg.No 201618838R  
Operation office: 77 Science Park Drive Str.,  
CINTECH III Business Center, #03-25/26,  
Singapore 118256

	20.42 lt		Finish loading OD 36" at H4, resumed chocking and framing
	23.30 lt	01.00 lt	Break time
28 February 2023	00.50 lt	01.05 lt	Safety briefing
	01.10 lt		Stevedore onboard
	01.20 lt	03.55 Lt	Resumed chocking and framing H4
	01.30 lt		Resumed loading H2, H3,
	02.05 lt	03.10 lt	H2 change spreaderbar and vessel moderate rolling due to rough sea condition and loading slowly
	03.55 lt		stop activity due to rain and break time
	08.00 hrs	08.29 hr	Safety briefing
	08.10 hrs	10.16 hrs	Postponed activity due to heavy rain
	10.16 hrs	10.50 hrs	Open hatch cover
	10.41 hrs		Lashing gang on board
	10.50 hrs	11.00 hrs	Resumed loading activity
	11.00- hrs	11.30 hrs	Rain again, postponed activity
	11.30 hrs	12.00 hrs	Stevedore disembark
	12.00 hrs		Lashing gang disembark
	12.00 hrs	13.00 hrs	Break time
	13.20 hrs		Open hatch cover
	13.30 hrs	17.00 hrs	Postponed activity due to heavy rain
17.00 hrs	19.00 hrs	Break time	
19.00 lt	24.00 lt	no activity due to rain	
01 March 2023	08.00 hrs	09.52 hrs	Postponed activity due to rain
	09.52 hrs		Open hatch cover
	10.10 hrs	10.15 hrs	Safety briefing
	10.15 hrs	10.30 hrs	Stevedore on board
	10.30 hrs	11.50 hrs	Resumed loading
	11.50 hrs	12.00 hrs	Stevedore disembark
	12.00 hrs	13.00 hrs	Break time
	13.00 lt	13.20 lt	Stevedore onboard
	13.20 lt	16.45 lt	Resumed loading
	15.50 lt		Waiting truck H2 & H3
	16.11 lt		H4 temporary stop loading due to chocking & framing
	16.17 lt		Resumed loading H3
	16.25 lt		Resumed loading H2
	16.45 lt	17.00 lt	Stevedore disembark
	17.00 lt	19.00 lt	Break time
	19.00 lt	19.10 lt	Safety briefing
	19.15 lt	19.30 lt	Stevedore on board
19.35 lt	23.30 lt	Resumed loading H2 & H3	
23.35 lt	24.00 lt	Stevedore disembark	
24.00 lt	01.00 lt	Break time	



*It's shipping & survey*

**CISS GROUP PTE.LTD.**

Registry address: 10 Anson Road , # 20-05,  
International Plaza, Singapore, 079903  
Reg.No 201618838R  
Operation office: 77 Science Park Drive Str.,  
CINTECH III Business Center, #03-25/26,  
Singapore 118256

02 March 2023	01.00 lt	01.15 lt	Safety briefing
	01.20 lt	01.25 lt	Stevedore on board
	01.30 lt	04.10 lt	Resumed loading H2 & H3
	01.30 Lt		start lashing Hatch 2 bay front tier 8,9,10
	03.00 lt		start lashing Hatch 2 bay aft tier 8,9,10
	04.10 lt	04.15 lt	Stevedore disembark
	04.15 lt	08.00 lt	Break time
	08.00 hrs	08.26 hrs	Safety briefing
	08.26 hrs	08.35 hrs	Stevedore onboard
	08.35 hrs	09.00 hrs	Waiting truck arrived
	09.11 hrs	11.45 hrs	Resumed loading
	11.45 hrs	12.00 hrs	Stevedore disembark
	13.10 hrs	13.27 hrs	Safety briefing
	13.13 hrs	13.30 hrs	Stevedore onboard
	13.30 hrs	14.15 hrs	Resumed loading H1, H2, H4
	14.15 hrs	17.00 hrs	Postponed loading activity due to rain, chocking and framing still continue inside H4
	17.00 hrs		Chocking gang disembark
	17.00 hrs		Break time and up to this moment weather condition at port still rainy
	19.00 hrs	19.20 hrs	Safety briefing
	19.20 hrs	19.25 hrs	Stevedore onboard
	19.30 hrs	23.30 hrs	Resumed loading H1, H2, H3 with drizzling condition during loading
	22.08 hrs	23.40 hrs	awaiting for cargo hatch 1 ( boxes )
	23.40 hrs	24.00 hrs	Stevedore disembark
23.40 hrs	01.00 hrs	Break time	
3 March 2023	00.50 hrs	01.00 hrs	Safety briefing
	01.00 hrs	01.20 hrs	Rain condition
	01.20 hrs	01.25 hrs	Stevedore onboard
	01.30 hrs	03.00 hrs	Resumed loading H1, H2, H3
	02.30 hrs		Stop loading activity due to heavy rain
	02.30 hrs	02.40 hrs	stevedore disembark
	02.40 hrs	03.00 hrs	closed Hatch 3, H2& H1 ,
	Noted : Stop activity due to heavy rain, and Hatch 4 closed half the hatch and continue chocking until 04.30 Lt		
	08.00 hrs	08.30 hrs	Safety briefing
	08.30 hrs	08.50 hrs	Stevedore onboard
	08.50 hrs	11.00 hrs	Resumed loading H1,H2, & H4
10.30 hrs	11.00 hrs	Waiting trailer H1 for cargo boxes	
11.00 hrs		Stevedore disembark	



*It's shipping & survey*

**CISS GROUP PTE.LTD.**

Registry address: 10 Anson Road , # 20-05,  
International Plaza, Singapore, 079903  
Reg.No 201618838R  
Operation office: 77 Science Park Drive Str.,  
CINTECH III Business Center, #03-25/26,  
Singapore 118256

	11.10 hrs	13.30 hrs	Break time friday prayer (Rain Coming)
	13.30 lt	13.50 lt	Stevedore on board
	13.50 lt	14.34 lt	Resumed loading H1, H2, & H4
	14.34 lt	15.16 lt	Postponed loading activity due to heavy rain
	15.16 lt	15.24 lt	Resumed loading H2
	15.24 lt	15.42 lt	Heavy rain again, postponed loading activity.
	15.42 lt		Open hatch cover
	15.45 lt		Resumed loading H2. H1 waiting skid cargo
	15.54 lt	16.50 lt	Resumed loading H4
	16.50 lt	17.00 lt	Stevedore disembark
	18.00 lt		Lashing gang disembark
	17.00 lt	19.00 lt	break time
	19.00 lt	19.15 lt	sefety briefing
	19.30 lt	19.35 lt	Stevedore on board
	19.40 lt	23.30 lt	Resumed loading H1, H2,&H4
	22.40 lt	23.30 lt	Resumed loading H3
	23.35 lt	24.00 lt	Stevedore disembark
	23.30 lt	01.00 lt	break time
04 March 2023	00.55 hrs	01.05 hrs	Safety briefing
	01.10 hrs	01.15 hrs	Stevedore on board
	01.20 hrs	04.00 hrs	Resumed loading H1, H3, & H4
	02.30 hrs	03.00 hrs	awaiting cargo for hatch 1 - connector whd external tieback and 4 remaining Palletize
	01.35 hrs	03.30 hrs	Lashing and securing hatch 2 bay aft and bay fwd
	04.00 hrs		Stevedore disembark
	04.00 lt	08.00 lt	break time
	08.00 hrs	08.20 hrs	Safety briefing
	08.20 hrs	08.40 hrs	Stevedore onboard
	08.40 hrs	10.06 hrs	Resumed loading H1, & H3 . H2 & H4 Lashing and chocking
	10.06 hrs	12.00 hrs	Postponed loading activity due to heavy rain, close half hatch cover. chocking and lashing still continue inside hatch no 2,3,4
	12.00 hrs		Stevedore and lashing gang disembark
	12.00 hrs	13.00 hrs	Break time and up to this moment weather condition at port still rain
	13.42 hrs		Open hatch cover. Weather condition still drizzling at port
	13.14 hrs	14.00 hrs	Open hatch cover



*It's shipping & survey*

**CISS GROUP PTE.LTD.**

Registry address: 10 Anson Road , # 20-05,  
International Plaza, Singapore, 079903  
Reg.No 201618838R  
Operation office: 77 Science Park Drive Str.,  
CINTECH III Business Center, #03-25/26,  
Singapore 118256

	14.00 hrs		Resumed loading H1,3,4 during drizzling
	15.28 hrs		Stop loading H3, resumed lashing and chocking
	16.11 hrs	16.21 hrs	Waiting truck
	16.21 hrs	16.55 hrs	Resumed loading H2 & H3 during drizzling
	16.55 hrs	17.00 hrs	Stevedore and lashing gang disembark
	17.00 hrs	19.00 hrs	Break time and weather condition still drizzling at port
	19.25 hrs	19.30 hrs	Safety briefing
	19-35 hrs	19.40 hrs	Open hatch cover. Weather condition still drizzling at port
	19.45 hrs	19.50 hrs	Open hatch cover
	20.20 hrs	23.00 hrs	Resumed loading H1,2,4 during drizzling
	23.30 hrs	24.00 hrs	Stevedore disembark
	23.00 hrs	01.00 hrs	Break time and weather condition still drizzling at port
05 March 2023	00.50 hrs	01.05 hrs	Safety briefing
	01.20 hrs		Resumed loading H1
	01.35 hrs		Complete Loading H1
	01.25 hrs		Resumed Hatch 2
	01.50 hrs		Hatch 3 Open
	02.00 hrs		Hatch 3 Commence loading Cargo Alexandria ( IOEC ) Bay fwd pipe 22" Loose
	02.40 hrs		Heavy Rain / Stop loading
	02.50 hrs		Resumed loading with Drizzling conditions
	03.00 hrs		Resumed loading Hatch 4w with Drizzling conditions
	04.10 hrs		Stop activity due to heavy rain & Stevedore disembark
	04.10 hrs	08.00 hrs	Break time & Heavy Rain
	08.17 hrs	08.25 hrs	Safety briefing
	08.25 hrs	08.50 hrs	Waiting truck
	08.50 hrs	09.15 hrs	Stevedore onboard
	09.15 hrs	11.45 hrs	Resumed loading
	11.45 hrs	12.00 hrs	Stevedore disembark
	12.00 hrs	13.00 hrs	Break time
	12.54 hrs	14.00 hrs	Rain at port
	14.00 hrs		Open hatch cover
	14.41 hrs	14.50 hrs	resumed loading
	14.50 hrs	15.36 hrs	Heavy rain. Stop loading activity
	15.36 hrs		Resumed loading



*It's shipping & survey*

**CISS GROUP PTE.LTD.**

Registry address: 10 Anson Road , # 20-05,  
International Plaza, Singapore, 079903  
Reg.No 201618838R  
Operation office: 77 Science Park Drive Str.,  
CINTECH III Business Center, #03-25/26,  
Singapore 118256

	15.40 hrs		H3 lashing and chocking	
	15.48 hrs		Stopped loading H3 due to technical issue with hatch cover, crews are repairing hydraulic cylinder of hatch cover no 3 forward. Chief officer said repair to completed before 20:00 hrs.	
	16.15 hrs		H2 lashing and chocking	
	16.45 hrs	17.00 hrs	Stevedore disembark	
	17.00 hrs	19.00 hrs	Break time	
	19.00 hrs	1910 hrs	Safety briefing	
	19.30 hrs	23.30 hrs	resumed loading H2 and H4	
	19.00 hrs	23.45hrs	H1 lashing and chocking	
	23.30 hrs	24.00 hrs	Stevedore disembark	
06 March 2023	00.30 lt	05.00 lt	resumed loading H2, H4	
	00.30 lt	03.11 lt	H4 lashing and chocking	
	03.00 lt	04.45 lt	Resumed Loading H4	
	00.30 lt	06.00 lt	Stevedore disembark	
	06.00 lt	08.00 lt	Break time	
	08.10 hrs	08.25 hrs	Safety briefing	
	08.35 hrs	08.47 hrs	Stevedore on board	
	08.50 hrs	12.00 hrs	Resumed loading H4	
	12.00 hrs		Break time	
		*up to this moment hatch cover no 3 still under repair by vessel crew		
		13.10 hrs	13.20 hrs	Stevedore on board
		13.20 hrs		H1 & H2 continue lashing and chocking
		13.30 hrs	16.00 hrs	Resumed loading H4 & H3
		18.00 hrs		Break meal time
		19.00 hrs		Stevedore on board
		19.10 hrs		Lashing and chocking crews on board
		19.20 -	24.00 hrs	Continue loading H3 and H4
	Note : break for meal 30 minutes			
07th March 2023	00.30 hrs		Stevedore on board	
	00.40 hrs		resumed Hatch 3 and hatch 4	
	00.45 hrs		continue lashing H2	
	03.15 hrs		complete lashing H2	
	03.15 hrs		complete loading H3	
	03 45 hrs		complete loading H4	
	04.00 hrs		commence lashing and chocking H3 and H4	
	10.00 hrs		indicating complete lashing and chocking	





*It's shipping & survey*

**CISS GROUP PTE.LTD.**

Registry address: 10 Anson Road , # 20-05,  
International Plaza, Singapore, 079903  
Reg.No 201618838R  
Operation office: 77 Science Park Drive Str.,  
CINTECH III Business Center, #03-25/26,  
Singapore 118256

**RECORD OF STEEL DURING LOADING - CARGO SURVEY  
HOLDS LOADED #1, 2, 3, 4**

	25.02.2023	26.02.2023	27.02.2023	28.02.2023	01.03.2023	02.03.2023	03.03.2023	04.03.2023	05.03.2023	06.03.2023	07.03.2023
<b>Malta Cargo</b>											
HOLD 1						23	72	39	2	0	
HOLD 2	80	232	204	16	208	119	110	10	22	23	
HOLD 3	64	112	216	44	184	127	23	52	30	0	27
HOLD 4	16	22	14		27	18	33	57	22	8	21
Received on board	160	366	434	60	419	287	238	158	76	31	48
Total received on board	160	526	964	1020	1439	1726	1964	2122	2198	2229	2277
Balance	2117	1751	1317	1257	838	551	313	155	79	48	0
<b>Alexandria cargo</b>											
HOLD 1								3			
HOLD 2											
HOLD 3									43	18	
HOLD 4											6
Received on board								3	43	18	6
Total received on board								3	46	64	70
Balance	70	70	70	70	70	70	70	67	24	6	0
<b>Mersin cargo</b>											
HOLD 1								2			
HOLD 2											
HOLD 3											
HOLD 4									8	27	
Received on board								2	8	27	0
Total received on board								2	10	37	37
Balance	37	37	37	37	37	37	37	35	27	0	0

### PHOTO REPORT



General view and testing of the Ultrasonic transmitters before inspection



Checking out of AgNO<sub>3</sub> solution at the openweather deck for determining of sea-salt content



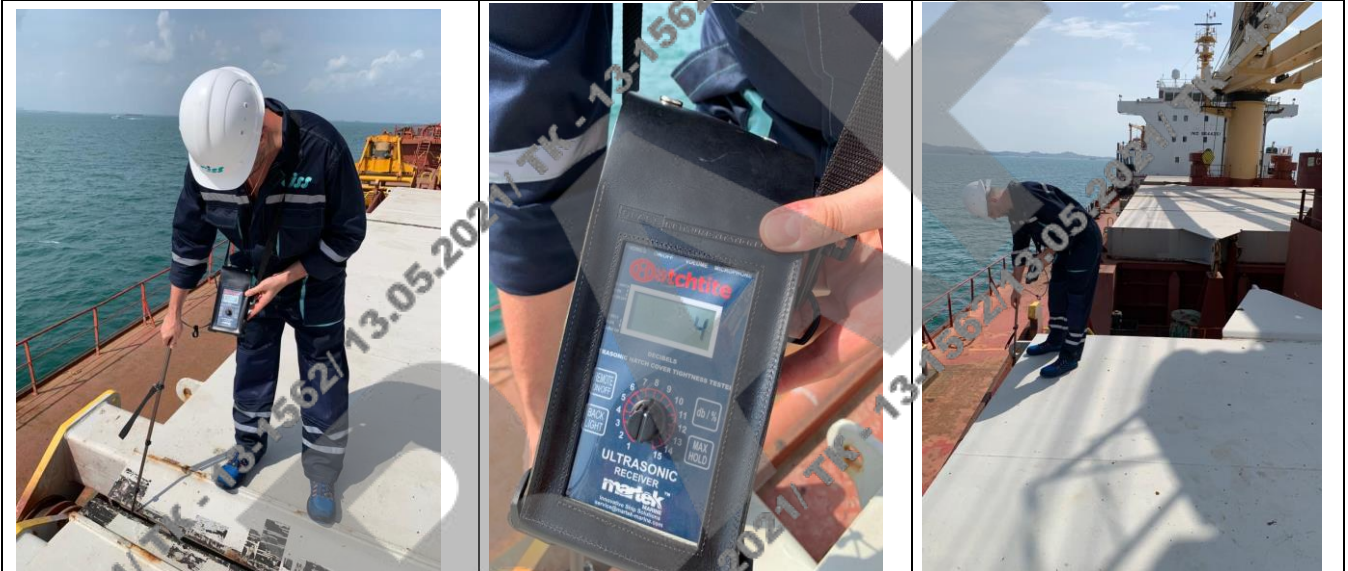
HOLD No1, Silver Test



HOLD No1, USWT test



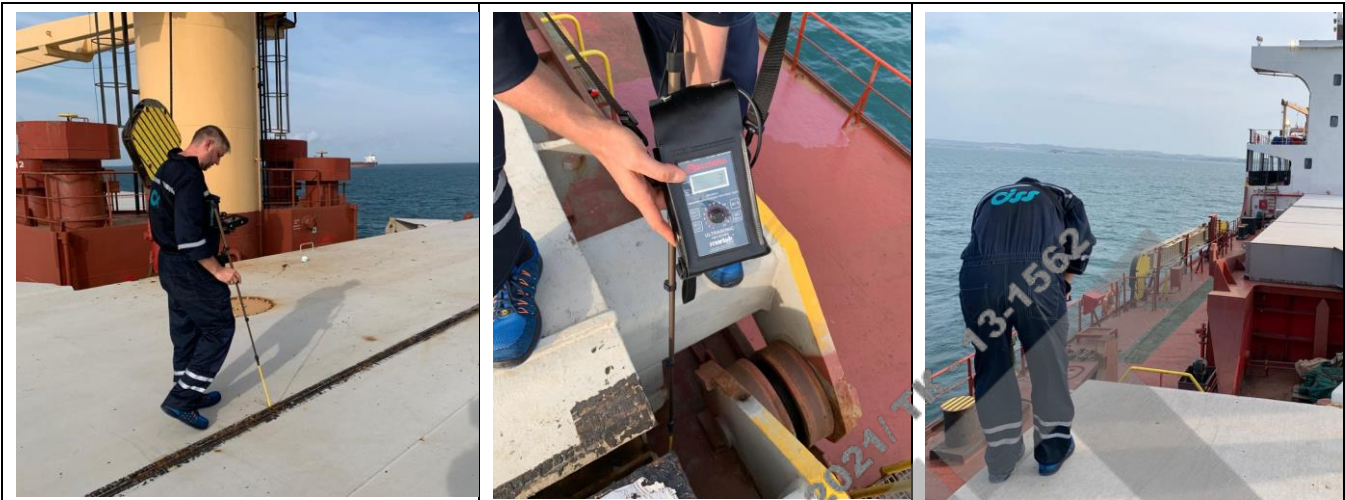
HOLD No2, Silver tests



HOLD No2, USWT measurements



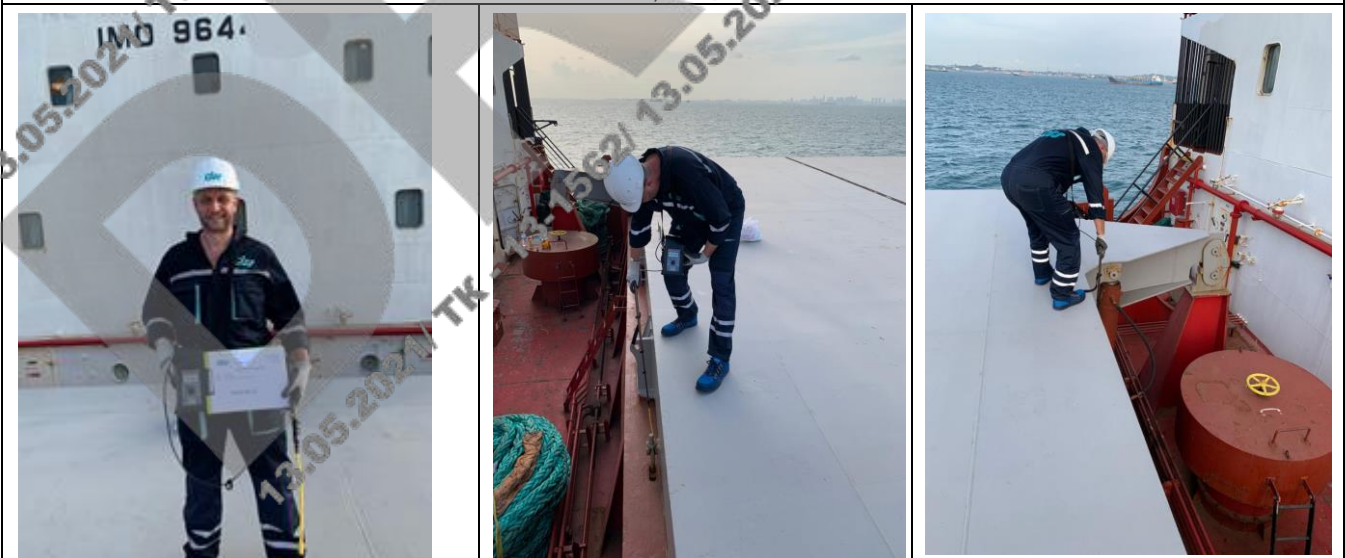
HOLD No3, Silver test



HOLD 3, USWT test



HOLD No4, Silver Test



HOLD No4 USWT test

**25.02.2023 Day Shift**



Hold №2 Cargo position



Hold №2 Cargo position



Hold №4 Cargo position



Hold №4 Cargo position

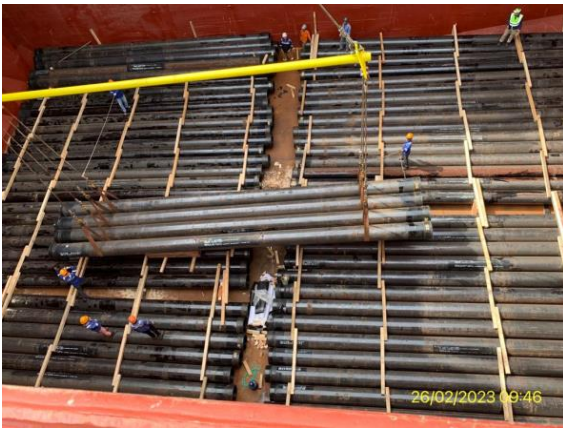
**26.02.2023 Day Shift**



Hold № 2 Cargo Loading



Hold №2 Cargo position



Hold № 3 Cargo Loading



Hold № 4 Cargo Loading



Hold №3 Cargo position



Hold №4 Cargo position

There are 6 additional silver tests done with the following numbers labeling, from №5 to №10. No salt residues were found



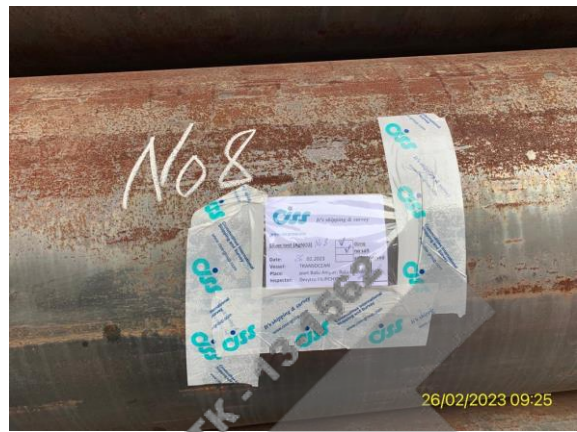
Pipe №5



Pipe №6



Pipe №7



Pipe №8



Pipe №9



Pipe №10

**27.02.2023 Day Shift**



Hold № 2 Cargo Loading



Hold №2 Cargo position





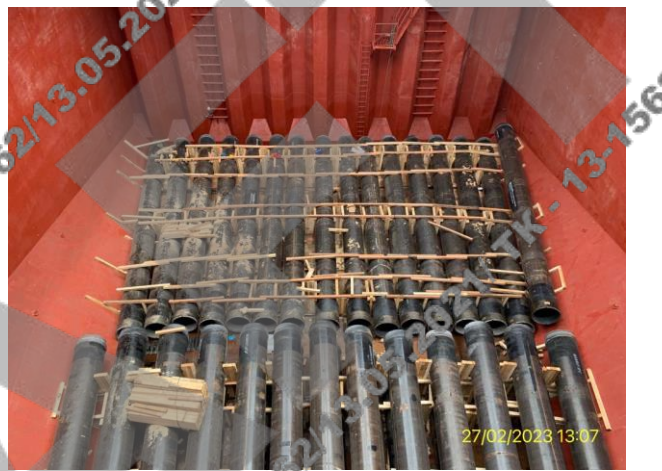
Hold № 3 Cargo Loading



Hold №3 Cargo position

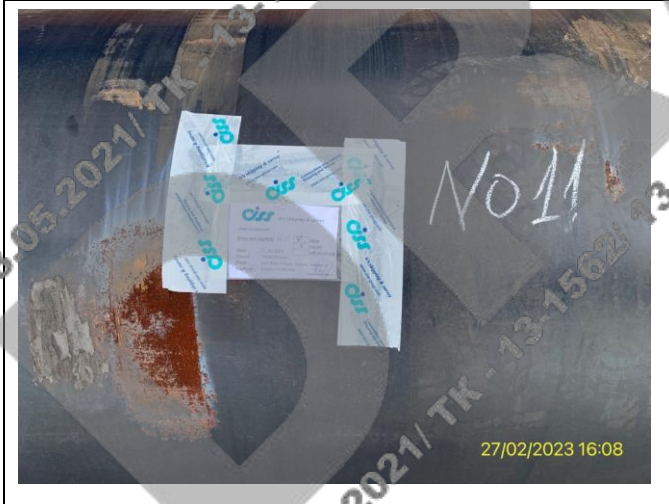


Hold № 4 Cargo Loading



Hold №4 Cargo position

There are 6 additional silver tests done with the following numbers labeling: from №11 to №16. No salt residues were found



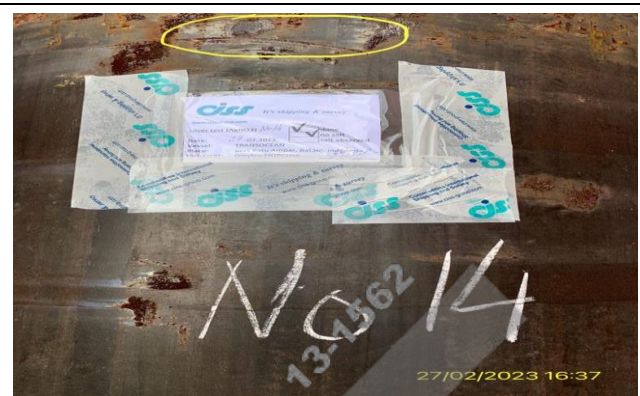
Pipe №11



Pipe №12



Pipe №13



Pipe №14



Pipe №15



Pipe №16

28.02.2023 Day Shift



No loading rain

01.03.2023 Day Shift



Hold № 2 Cargo Loading



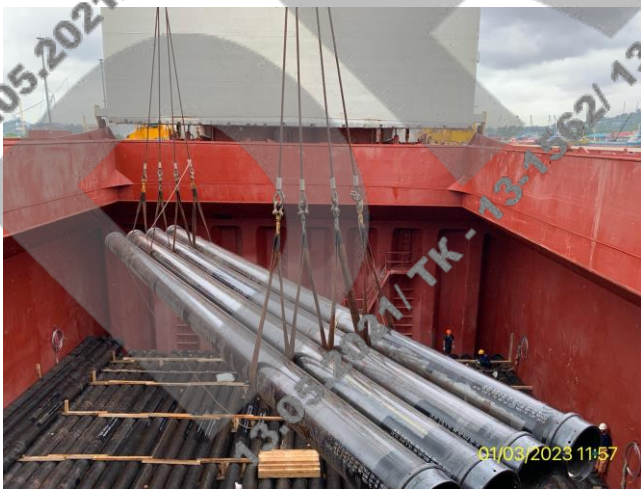
Hold №2 Cargo position



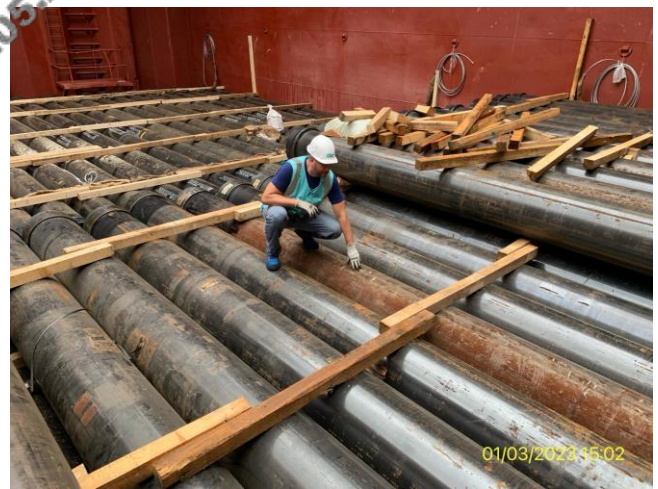
Hold № 3 Cargo Loading



Hold №3 Cargo position



Hold № 4 Cargo Loading



Hold №4 Cargo position

There are 4 additional silver tests done with the following numbers labeling: from №17 to №20. No salt

residues were found



Pipe №17



Pipe №18



Pipe №19



Pipe №20

02.03.2023 Day Shift



Hold № 1 Cargo Loading



Hold №1 Cargo position



Hold № 2 Cargo Loading



Hold №2 Cargo position



Hold № 3 Cargo Loading



Hold №3 Cargo position

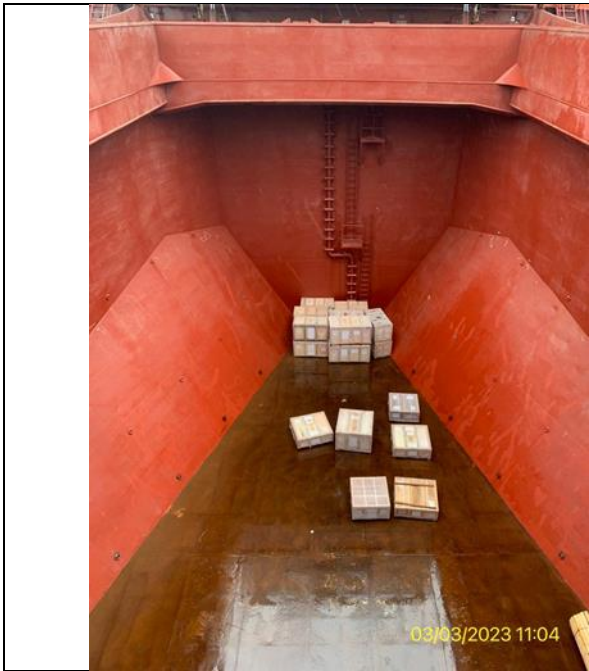
**3.03.2023 Day Shift**



Hold № 4



Hold № 2



Hold No1



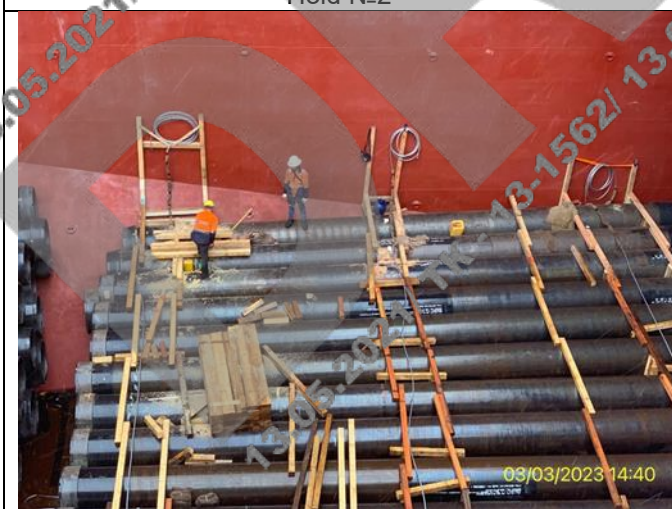
Loading supervision



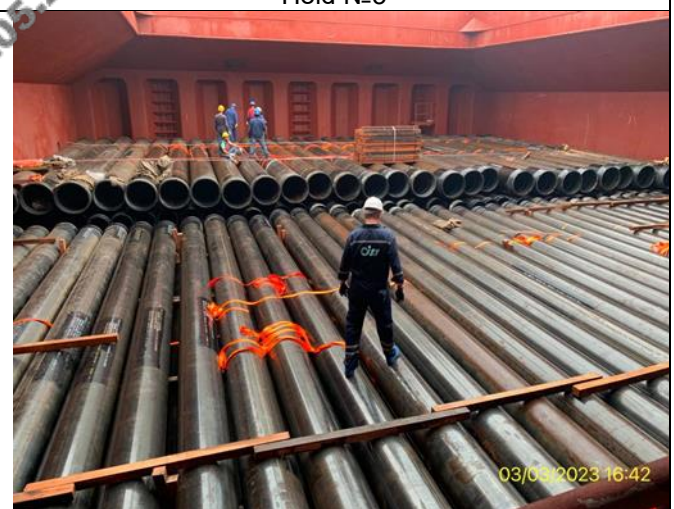
Hold No2



Hold No3



Hold No4



Hold No2

4.03.2023 Day Shift



Hold № 3 Loading operations



Loading supervision



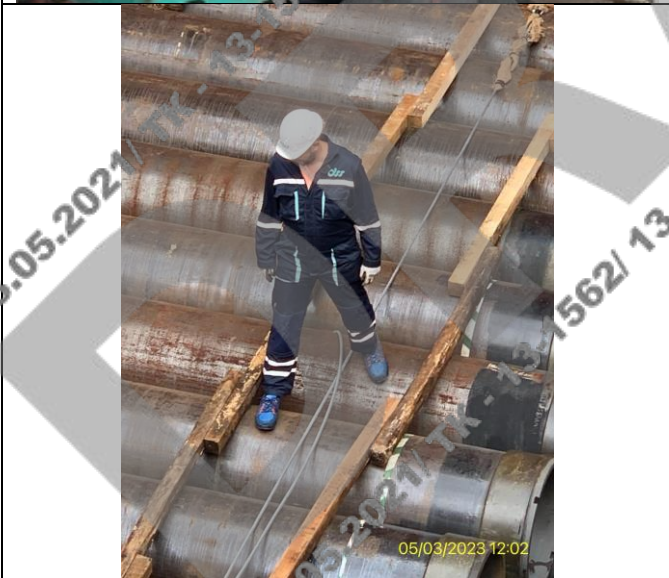
Hold № 2 Lashing



Hold №1 Loading supervision



Loading Operations Holds 1,3,4  
 05.03.2023 Day Shift



Hold No 4





05/03/2023 12:35



05/03/2023 12:41

Hold №3



05/03/2023 12:45

Hold № 1



05/03/2023 14:4

Loading Operations

Hold № 1  
6.03.2023 Day Shift



06/03/2023 10:33



06/03/2023 10:58

Loading resumed in the Hold № 4 only



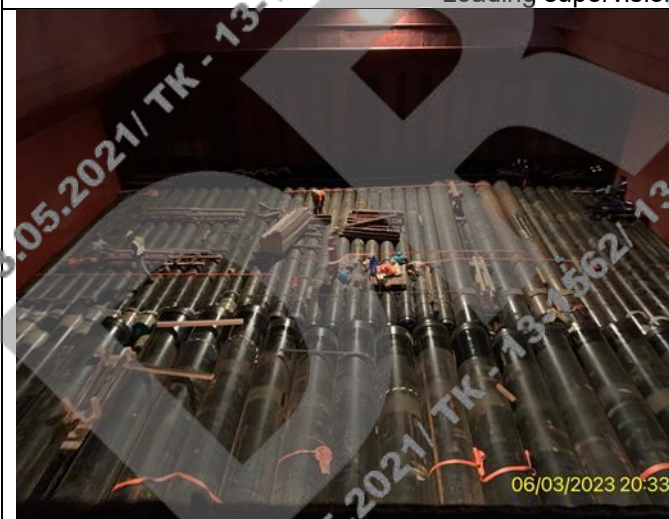
Hold №3



Hold №1



Loading supervision onto the Hold № 3



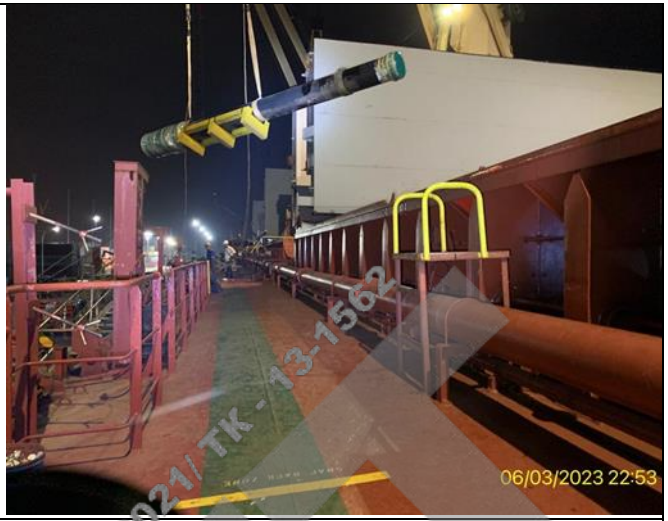
Hold № 4



Hold № 3



Hold № 2



Loading supervision

07.03.2023 Day Shift



Inspection performed for the rest of cargo to be loaded onboard





Inspection performed for the rest of cargo to be loaded onboard





The holds are sealed, the Surveyor's recommendations are fulfilled

THE END OF REPORT

Dated: 7 of MARCH, 2023

